



Godrej | PROPERTIES

A HUNDRED THOUSAND

Reasons To Live at an Exceptional Address

Edition 6: The New Era of Upgraded Urban Living

Kharadi: Pune's
Thriving Landmark

The Grand Scale of Living
Spread Across

~9,290 Sq. Mt. **1 Lakh Sq. Ft.**

ONE REASON
STARTS THE SEARCH.
A HUNDRED THOUSAND
MAKE IT HOME.



Artist impression for representation purposes only.

THE GODREJ LEGACY

Godrej Properties brings the Godrej Group's philosophy of innovation, sustainability, and excellence to the real estate industry. Each of Godrej Properties' developments combines a 128-year legacy of excellence and trust with a commitment to cutting-edge design and technology.

Godrej | PROPERTIES

INDIA'S NO.1*
REAL ESTATE
DEVELOPER





K HARADI

Actual site photograph

KHARADI: PUNE'S THRIVING LANDMARK

Kharadi, an address perfectly aligned with Pune's growth horizon. Where seamless connectivity meets future-ready infrastructure, placing you at the heart of Pune's fastest-growing corridor. A location designed to grow in value, opportunity, and lifestyle.

A HUNDRED
THOUSAND REASONS
WHY EVERYTHING
ALIGNS HERE.

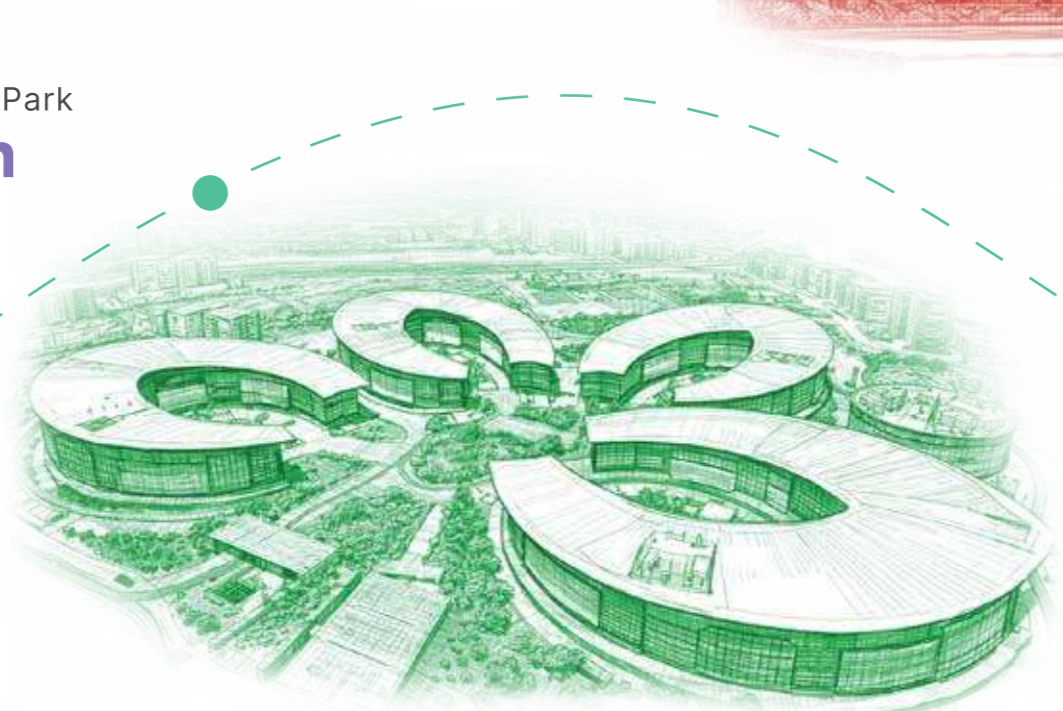
BUSINESS DISTRICT ADVANTAGE:

At the Heart of Pune's IT Powerhouse

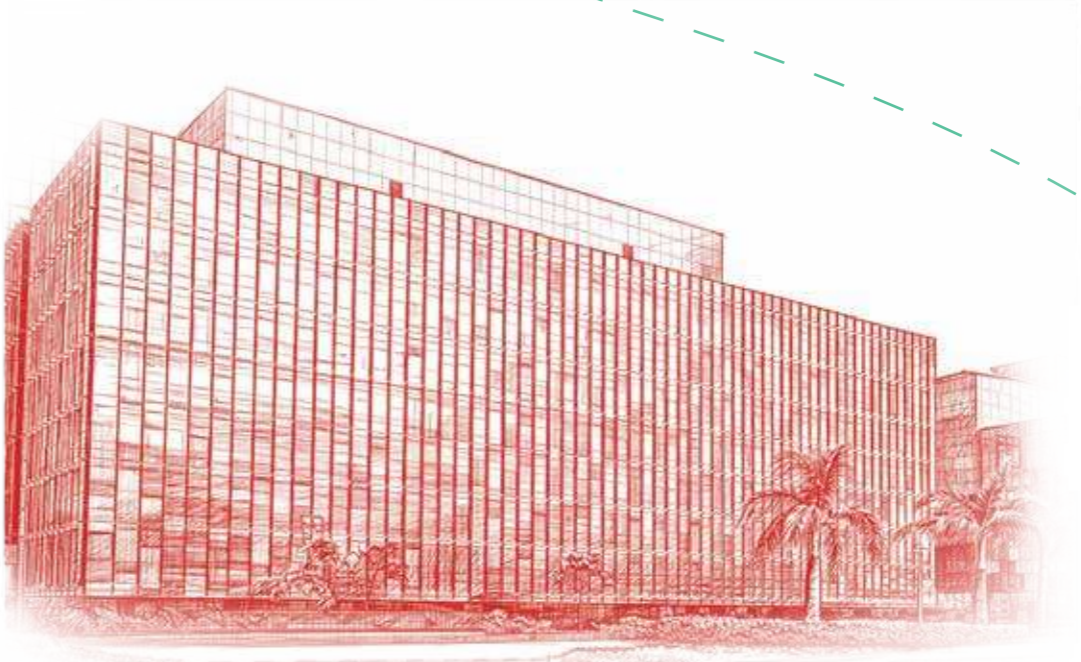
Strategically located in one of Pune's most dynamic commercial corridors, this destination sits at the heart of a thriving business district. Surrounded by premium corporate infrastructure and well-planned commercial ecosystems, the area has evolved into a high-demand hub for professionals and fast-growing industries.

IT Parks

EON Free Zone IT Park
~0.5 km



Commerzone
~1.4 km



World Trade Zone
~0.5 km

*Distances mentioned are approximate and calculated using "Kharadi, Pune" on Google Maps as a general reference point. Actual distances may vary.

CONNECTIVITY THAT KEEPS YOU CLOSE TO EVERYTHING

Enjoy direct access to Pune's key roads with close proximity to major lifestyle and business hubs. With upcoming metro connectivity and the proposed ring road, Kharadi stands as a future-ready address offering smoother commutes and long-term value.

Pune's Key Neighbourhoods



Viman Nagar
8-12 minutes



Kalyani Nagar
12-15 minutes



Koregaon Park
10-15 minutes

Magarpatta-Hadapsar Belt
10-15 minutes



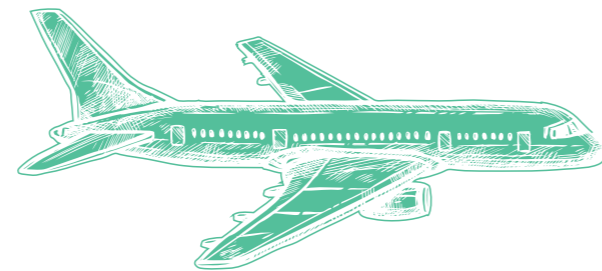
INTERCITY

Ahilyanagar
~2.5 hours via NH-753F

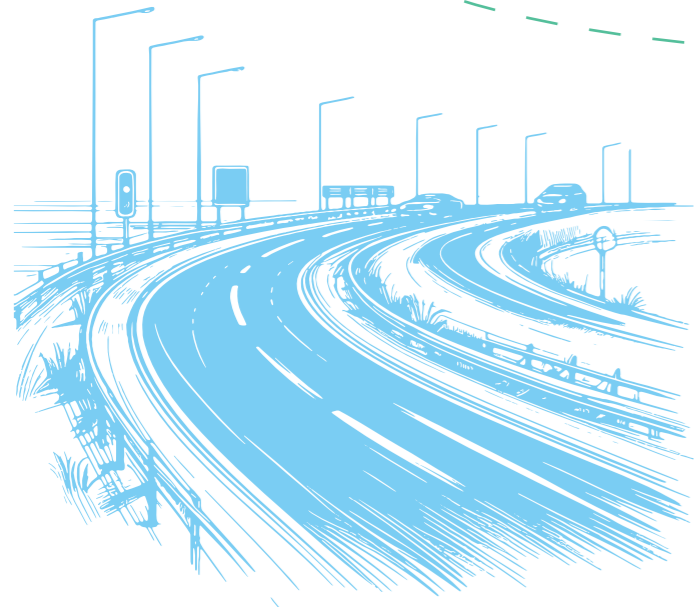
Mumbai
~2.5-3 hours
via Nagar Road and the
Pune-Mumbai Expressway

Nashik
~5 hours

Pune International Airport
~20 minutes



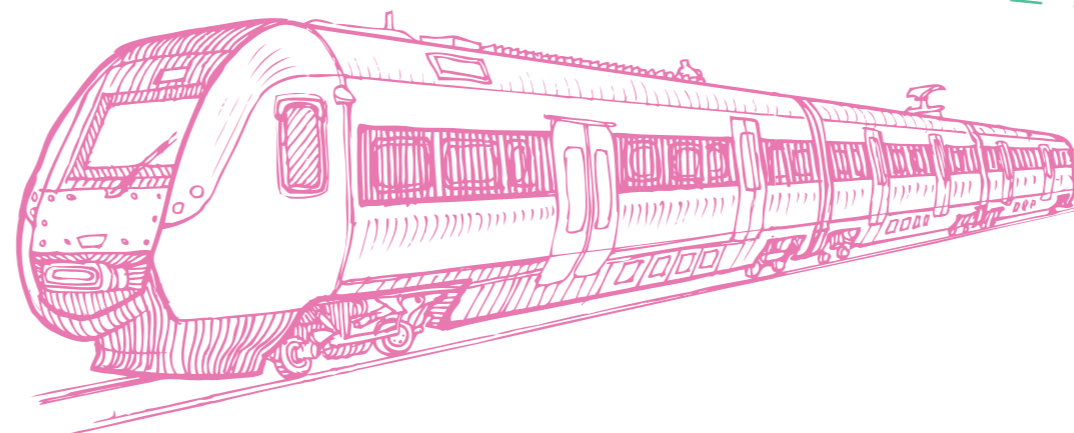
Chhatrapati Sambhajnagar
~4 hours



Proposed Pune Ring Road
~40 minutes

UPCOMING ACCESSIBILITY

Metro Line Under Development
Ramwadi-Kharadi (Line 2)
~10 minutes



*Time mentioned as per google maps and is subject to change as per traffic conditions. Actual time may vary.

LIFESTYLE, BUILT INTO THE NEIGHBOURHOOD

Kharadi has emerged as one of Pune's most complete lifestyle districts, seamlessly blending work, leisure, and everyday convenience. With malls, cafés, fitness centres, reputed schools, and healthcare close by, it offers a well-established, connected way of living. Wide roads, planned development, and strong connectivity have helped the neighbourhood grow in an organised manner, making it function smoothly even as it continues to expand.

Social

- Cafe 1730, Kharadi: ~0.5 km
- Valour Kitchen & Bar, Kharadi: ~0.5 km
- The Irani Cafe, Kharadi: ~0.5 km
- Blue Tokai Coffee Roasters, Viman Nagar: ~6 km
- Tyk Tyk, Kharadi: ~0.8 km
- Social, Viman Nagar: ~5 km
- Copper Chimney, Kalyani Nagar: ~5 km
- Toit, Viman Nagar: ~6 km
- Cobbler & Crew, Kalyani Nagar: ~6.6 km
- Mister Merchant's, Kalyani Nagar: ~7 km
- Gilt Club – Global Business Hub, Kharadi: ~0.5 km
- Valour Kitchen & Bar, Kharadi: ~0.5 km



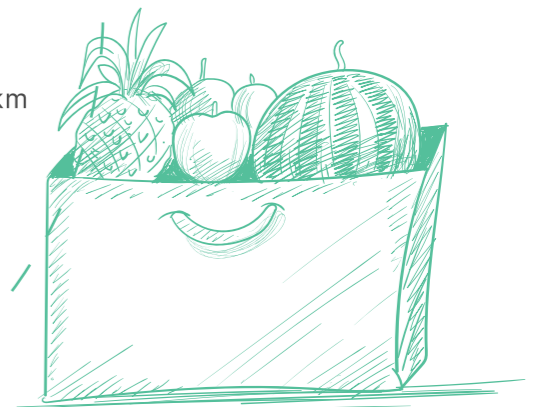
Entertainment & Recreation

- PVR INOX, Phoenix Marketcity: ~5 km
- Cinepolis, Seasons Mall: ~6 km
- Timezone, Phoenix Marketcity: ~5 km
- Amoeba Sports Bar & Bowling: ~5 km
- Hard Rock Cafe, Kalyani Nagar: ~8 km
- Sports Arenas & Indoor Courts (Kharadi–Mundhwa Belt): ~5 km



Retail & Shopping Destinations

- Phoenix Marketcity, Viman Nagar: ~5 km
- Seasons Mall, Magarpatta: ~6 km
- KOPA Mall, Koregaon Park: ~8 km
- Nagar Road High Street & Local Retail: Within 2–4 km

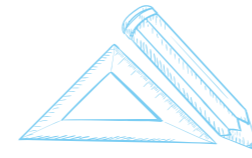


*Distances mentioned are approximate and calculated using "Kharadi, Pune" on Google Maps as a general reference point. Actual distances may vary.



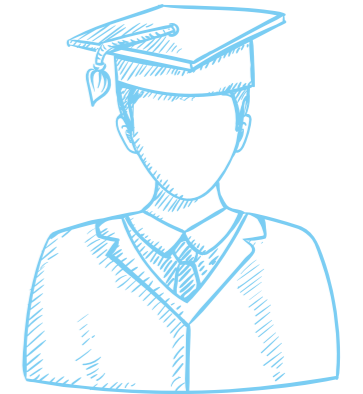
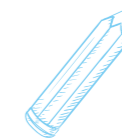
Parks, Fitness & Wellness

- Kharadi Garden, Kharadi Gaon: ~1 km
- Rajmata Jijau Oxygen Park, Wadgaon Sheri: ~4 km



Schools

- EON Gyanankur English Medium School: ~1–1.5 km
- PDEA's Shardabai Pawar English Medium School (CBSE): ~1 km
- EuroSchool, Kharadi: ~1.1 km
- Victorious Kidss Educares: ~1.4 km
- Kothari International School: ~1.4 km
- The Orbis School, Keshav Nagar: ~5.6 km



Hospitals

- Rising Medicare Hospital: ~1 km
- Manipal Hospital, Kharadi: ~2.7 km
- Vatsalya Hospital: ~2.9 km
- K.K. Hospital: ~3.6 km
- Cloudnine Hospital, Kalyani Nagar: ~7.5 km



Wellness

- Premium gyms & fitness centres within 3–5 km
- Yoga and wellness studios across Kharadi and surrounding neighbourhoods
- Group fitness, dance, and personal training facilities supporting daily routines
- Neighbourhood parks and open spaces encouraging outdoor activity

LAUNCHING

Godrej  Ivara
K H A R A D I , P U N E



A HUNDRED THOUSAND REASONS TO UPGRADE TO THE GRAND SCALE OF LIVING

Spread across ~9,290 Sq. Mt. **1 Lakh Sq. Ft.**

of curated amenity spaces, the project offers a complete lifestyle ecosystem designed to elevate everyday living. From wellness and recreation to leisure and community experiences, every zone comes together as a hundred thousand reasons to upgrade the way you live.



*The furniture accessories, paintings, items, electronics good additional fittings /fixtures, decorative items, false ceiling including furnishing materials, specifications, shades, sizes and colour of tiles etc. Shown in the images are only indicative in nature and are for representation purpose only.

Artist impression for representation purposes only.

ONE OF YOUR HUNDRED THOUSAND REASONS TO WORK SEAMLESSLY.

Co-Working Space

Designed for today's hybrid lifestyle, the co-working space at Godrej Ivora offers a refined workspace with co-working zones, comfortable seating, and dedicated break areas. It is located within the clubhouse and offers over

~1,858+ Sq. Mt. 20,000 Sq. Ft.

to support productivity with ease and comfort.



*The furniture accessories, paintings, items, electronics good additional fittings /fixtures, decorative items, false ceiling including furnishing materials, specifications, shades, sizes and colour of tiles etc. Shown in the images are only indicative in nature and are for representation purpose only.

Artist impression for representation purposes only.

**ONE OF YOUR
HUNDRED THOUSAND REASONS
TO MOVE DAILY.**

Gym

The gym at Godrej Ivara is a modern, well-equipped fitness space designed to energise the body and mind. It is located within the clubhouse and offers over

-929 Sq. Mt. 10,000 Sq. Ft.

to make fitness feel less like a routine and more like a lifestyle.



*The furniture accessories, paintings, items, electronics good additional fittings /fixtures, decorative items, false ceiling including furnishing materials, specifications, shades, sizes and colour of tiles etc. Shown in the images are only indicative in nature and are for representation purpose only.

Artist impression for representation purposes only.

ONE OF YOUR HUNDRED THOUSAND REASONS TO INDULGE & SOCIALIZE

Café Space

The café space is curated in a Mediterranean theme, inspired by coastal European elegance. It is located within the clubhouse and offers over

-929 Sq. Mt. 10,000 Sq. Ft.

to offer a refined setting for conversations and leisurely indulgence.



Artist impression for representation purposes only.

**ONE OF YOUR
HUNDRED THOUSAND REASONS
TO LIVE AMIDST TRANQUIL NATURE.**

Across ~ 2.43 hectares (~6 acres) of open calm, everyday moments unfold outdoors — for movement, pause, and connection across generations.



LEGEND

GROUND

- 01. ENTRY / EXIT
- 02. PEDESTRIAN ENTRY
- 03. SECURITY
- 04. ENTRY PLAZA
- 05. DROP - OFF AREA
- 06. FEATURE WALL WITH TOWER SIGNAGE
- 07. TOWER ENTRANCE LOBBY
- 08. PARKING ENTRY
- 09. DRIVEWAY
- 10. FITNESS PATH
- 11. SURFACE PARKING
- 12. SERVICE AREA

CLUBHOUSE-1 INDOOR AMENITIES

GROUND FLOOR

- BANQUET HALL 1
- BANQUET HALL 2
- GUEST ROOMS (2 NOS.)

FIRST FLOOR

- CAFÉ SPACE
- ALFRESCO TERRACE DINING -FOR CAFÉ

CLUBHOUSE-2 TERRACE AMENITIES

- 01. SKY GAZING DECK
- 02. WALKWAY
- 03. SEATING
- 04. STRETCH LAWN
- 05. SKYLIGHT
- 06. COVERED TRELLIS WITH SEATER
- 07. SEATING ALCOVE
- 08. LAWN
- 09. BAR SEATING
- 10. FOOD SERVING COUNTER

CLUBHOUSE-2 INDOOR AMENITIES

GROUND FLOOR

- BADMINTON COURT
- SQUASH COURT
- GYM
- YOGA ROOM

FIRST FLOOR

- LIBRARY
- WELLNESS / SPA AREA
- MULTI-ACTIVITY AREA
- INDOOR GAMES
- CRÉCHE AREA

SECOND FLOOR

- CO-WORKING SPACE

RG AREA

- 01. ACCENT PAVING
- 02. WALKWAY
- 03. PET PARK
- 04. STAGE MOUNT
- 05. PARTY LAWN
- 06. FUTSAL / MUGA COURT
- 07. GALLERY ON BERMS
- 08. BENCH SEATER
- 09. FRUIT ORCHARDS

ADJACENT TO CLUBHOUSE-1

- 01. OUTDOOR CAFÉ AREA
- 02. BANQUET LAWN
- 03. BBQ PAVILION
- 04. FOREST LOUNGE
- 05. BAND STAND SPACE

ADJACENT TO CLUBHOUSE-2

- 01. DROP - OFF
- 02. STEPPED GARDEN
- 03. LOWER DECK
- 04. RAMP ACCESS

PODIUM LEVEL

- 01. CENTRAL PODIUM ENTRY
- 02. CHESS COURT
- 03. HALF BASKETBALL COURT
- 04. GAME COURT
- 05. ACCENT PAVING
- 06. FLOATING DECK WITH WATER FEATURE
- 07. SCULPTURE
- 08. YOUTH CORNER
- 09. ALFRESCO PLAZA
- 10. WALKWAY
- 11. COVERED TRELLIS
- 12. CONGREGATION LAWN
- 13. STAGE
- 14. WORK PODS
- 15. SEATING

- 16. AMPHITHEATRE
- 17. SEATING ALCOVE
- 18. SENIORS' ALCOVE
- 19. REFLEXOLOGY WALK/ PATH
- 20. PAVILION
- 21. SKATE PARK
- 22. GARDEN GYM
- 23. MULTI-PLAY COURT
- 24. PICKLEBALL COURT
- 25. PRACTICE LAWN
- 26. TREE DECK / ELEVATED DECK
- 27. KIDS PLAY AREA
- 28. WELLNESS LAWN
- 29. PAVILION

- 30. MEDITATION DECK
- 31. BOX CRICKET COURT
- 32. WORKOUT ZONE
- 33. MAIN POOL (LAP POOL)
- 34. POOL CABANA
- 35. LOUNGE DECK
- 36. JACUZZI
- 37. KIDS' POOL
- 38. CHANGE ROOMS (FOR SWIMMING POOL)
- 39. FITNESS PATH ON PODIUM



**ONE OF YOUR
HUNDRED THOUSAND REASONS TO
MAKE LEISURE A DAILY HABIT WITH
EXPANSIVE AMENITY SPACE SPANNING OVER
~9,290 SQ. MT.
1 LAKH SQ. FT.**



CLUBHOUSE 1

Social & Celebration Spaces

Clubhouse 1 is designed for indulgence and community living, offering vibrant spaces that encourage gathering and relaxation. Its extended open amenities include an outdoor café area, a banquet lawn, a barbecue pavilion, and a tranquil forest lounge, complemented by a thoughtfully curated band stand space. Whether it's weekend brunches, celebrations, or evening conversations, Clubhouse 1 creates the perfect setting to unwind and connect.



CLUBHOUSE 2

Elevated Leisure & Lifestyle Decks

Clubhouse 2 is designed as an immersive lifestyle destination, centered around layered outdoor spaces and thoughtfully curated comfort. Its extended open amenities include a landscaped stepped garden, a lower deck, and seamless drop-off access, offering a setting that feels open, structured, and welcoming. Premium lifestyle amenities include a sky-gazing deck, a lawn, covered trellis with seater, seating alcoves, bar seating, and a food serving counter. Together, these elements create a harmonious balance of calm, connection, and everyday leisure.



*The furniture accessories, paintings, items, electronics good additional fittings / fixtures, decorative items, false ceiling including furnishing materials, specifications, shades, sizes and colour of tiles etc. Shown in the images are only indicative in nature and are for representation purpose only.

Artist impression for representation purposes only.

**ONE OF YOUR
HUNDRED THOUSAND REASONS
TO CELEBRATE AT HOME.**

2 Banquet Halls

A refined setting for celebrations that deserve more than just space. Host milestones, festivals, and gatherings in style, right at home.



Artist impression for representation purposes only.

**ONE OF YOUR
HUNDRED THOUSAND REASONS
TO PLAY SERIOUSLY.**

Badminton Court

Dedicated badminton courts crafted for smooth gameplay and serious practice. Stay agile, stay competitive, and make every rally count.



**ONE OF YOUR
HUNDRED THOUSAND REASONS
TO PUSH HARDER.**

Squash Court

An enclosed arena engineered for rapid rallies and competitive play. Push your pace, own the wall, and let every point drive you forward.



*The furniture accessories, paintings, items, electronics good additional fittings /fixtures, decorative items, false ceiling including furnishing materials, specifications, shades, sizes and colour of tiles etc. Shown in the images are only indicative in nature and are for representation purpose only.

Artist impression for representation purposes only.

**ONE OF YOUR
HUNDRED THOUSAND REASONS
TO RAISE CURIOUS LITTLE
ACHIEVERS.**

Crèche Area

A nurturing space designed for comfort, care, and early learning.
Peace of mind for you, joyful moments for them.



**ONE OF YOUR
HUNDRED THOUSAND REASONS
TO LET CHILDHOOD FEEL
LIMITLESS.**

Kids' Play Area

A vibrant outdoor zone designed for energy, exploration, and endless play. Where laughter echoes louder and childhood finds room to grow.

Artist impression for representation purposes only.



*The furniture accessories, paintings, items, electronics good additional fittings / fixtures, decorative items, false ceiling including furnishing materials, specifications, shades, sizes and colour of tiles etc. Shown in the images are only indicative in nature and are for representation purpose only.

Artist impression for representation purposes only.

**ONE OF YOUR
HUNDRED THOUSAND
REASONS TO UNWIND.**

Indoor Games

A vibrant social hub designed for friendly rivalries, shared laughter, and effortless playtime.



*The furniture accessories, paintings, items, electronics good additional fittings /fixtures, decorative items, false ceiling including lighting materials, color palette, items, sizes and color of material. Shown in the images are only indicative in nature and are for representation purpose only.

Artist impression for representation purposes only.

**ONE OF YOUR
HUNDRED THOUSAND
REASONS TO IMMERSE IN
THOUGHT.**

Library

A quiet sanctuary curated for focus, reflection, and the simple pleasure of a good read.

WELLNESS RETREAT

**A sanctuary designed for calm,
balance, and everyday reset.**



**ONE OF YOUR
HUNDRED THOUSAND REASONS
TO FEEL CALM.**

Main Pool (Lap Pool)

A serene expanse of water designed for both leisurely dips and focused laps. Unwind, recharge, and let every swim bring a sense of calm.

Artist impression for representation purposes only.



*The artwork is only for representation purpose. Final artwork may vary as per selection.

Artist impression for representation purposes only.

**ONE OF YOUR
HUNDRED THOUSAND REASONS
TO LET EVENINGS FEEL
LIKE A RETREAT.**

Floating Deck with Water Feature

A serene floating deck embraced by gentle water features and lush greens. Pause, unwind, and let every evening settle into quiet comfort.



*The furniture accessories, paintings, items, electronics good additional fittings /fixtures, decorative items, false ceiling including furnishing materials, specifications, shades, sizes and colour of tiles etc. Shown in the images are only indicative in nature and are for representation purpose only.

Artist impression for representation purposes only.

ONE OF YOUR HUNDRED THOUSAND REASONS TO BREATHE, STRETCH, AND UNWIND

Yoga Room

A calm, thoughtfully designed space that invites stillness and focus.
Begin and end each day with balance and clarity.



**ONE OF YOUR
HUNDRED THOUSAND REASONS
TO COME TOGETHER.**

Amphitheatre

A thoughtfully designed open-air space that brings the community closer. From performances to shared moments, it turns gatherings into experiences.

SPORTS & RECREATION

An active lifestyle finds its perfect setting.



Artist impression for representation purposes only.

**ONE OF YOUR
HUNDRED THOUSAND REASONS
TO MAKE EVERY STEP COUNT.**

Fitness Path

A thoughtfully laid-out pathway designed for mindful walks and energising strides. Turn daily movement into a refreshing ritual surrounded by greens.



**ONE OF YOUR
HUNDRED THOUSAND REASONS
TO UNLOCK YOUR POTENTIAL.**

Multi-Play Court

A professionally designed court that brings the game closer to you. Sharpen your skills, stay active, and make every match count.



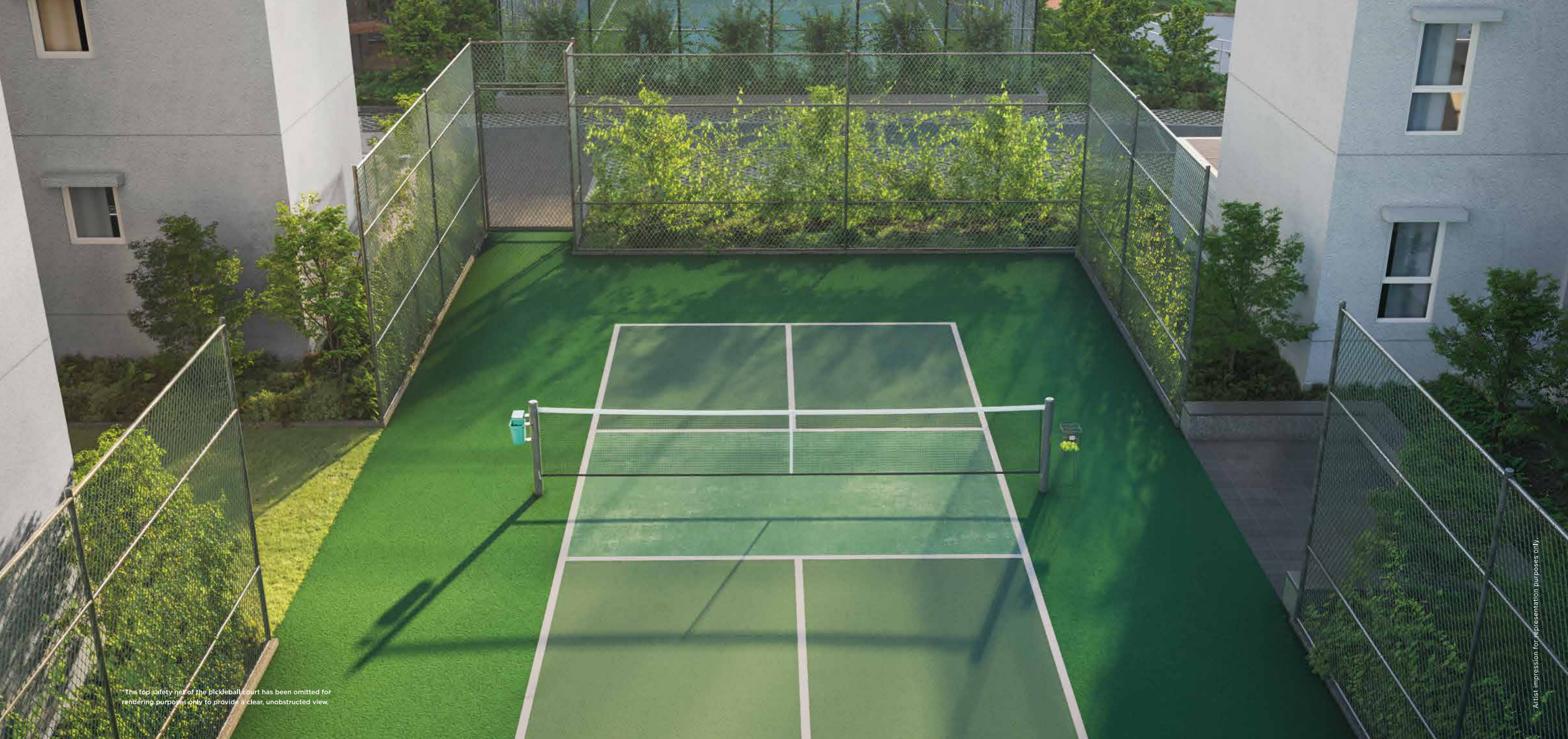
*The top safety net of the basketball court has been omitted for rendering purposes only to provide a clear, unobstructed view.

Artist impression for representation purposes only.

**ONE OF YOUR
HUNDRED THOUSAND REASONS
TO ENJOY SPORT LIKE
A LIFESTYLE.**

Half Basketball Court

A dedicated half court designed for quick games and high-energy sessions. Shoot, train, and keep the spirit of the game alive every day.



*The top safety net of the pickleball court has been omitted for rendering purposes only to provide a clear, unobstructed view.

Artist impression for representation purposes only.

**ONE OF YOUR
HUNDRED THOUSAND REASONS
TO PLAY EASY.**

Pickleball Court with Courtside Nook

A thoughtfully designed court that makes the game accessible. Play, rally, and unwind in a space that keeps the energy light and social.



*The top safety net of the cricket pitch court has been omitted for rendering purposes only to provide a clear, unobstructed view.

Artist impression for representation purposes only.

**ONE OF YOUR
HUNDRED THOUSAND REASONS
TO BOND OVER EVERY BOUNDARY.**

Box Cricket Court

A dedicated box cricket court designed for spirited matches and friendly rivalries. Gather your squad, swing big, and make every game memorable.

ONE OF YOUR HUNDRED THOUSAND REASONS TO DISCOVER MORE WITHIN YOUR OWN ADDRESS.

Clubhouse 1



Outdoor Café Area



Banquet Lawn



Barbeque Pavilion



Band Stand Space



2 Guest Rooms



Alfresco Terrace Dining



Forest Lounge

Podium Level



Chess Court



Game Court



Youth Corner



Reflexology Walk/Path



Skate Park



Meditation Deck



Pool Cabana



Kids' Pool



Jacuzzi



Floating Deck with
Water Feature

Clubhouse 2



Stepped Garden



Sky Gazing Deck



Library



Seating Alcove



Lawn



Bar Seating



Indoor Games

Residential Green Areas



Pet Park



Party Lawn



Fruit Orchards



Food Serving Counter



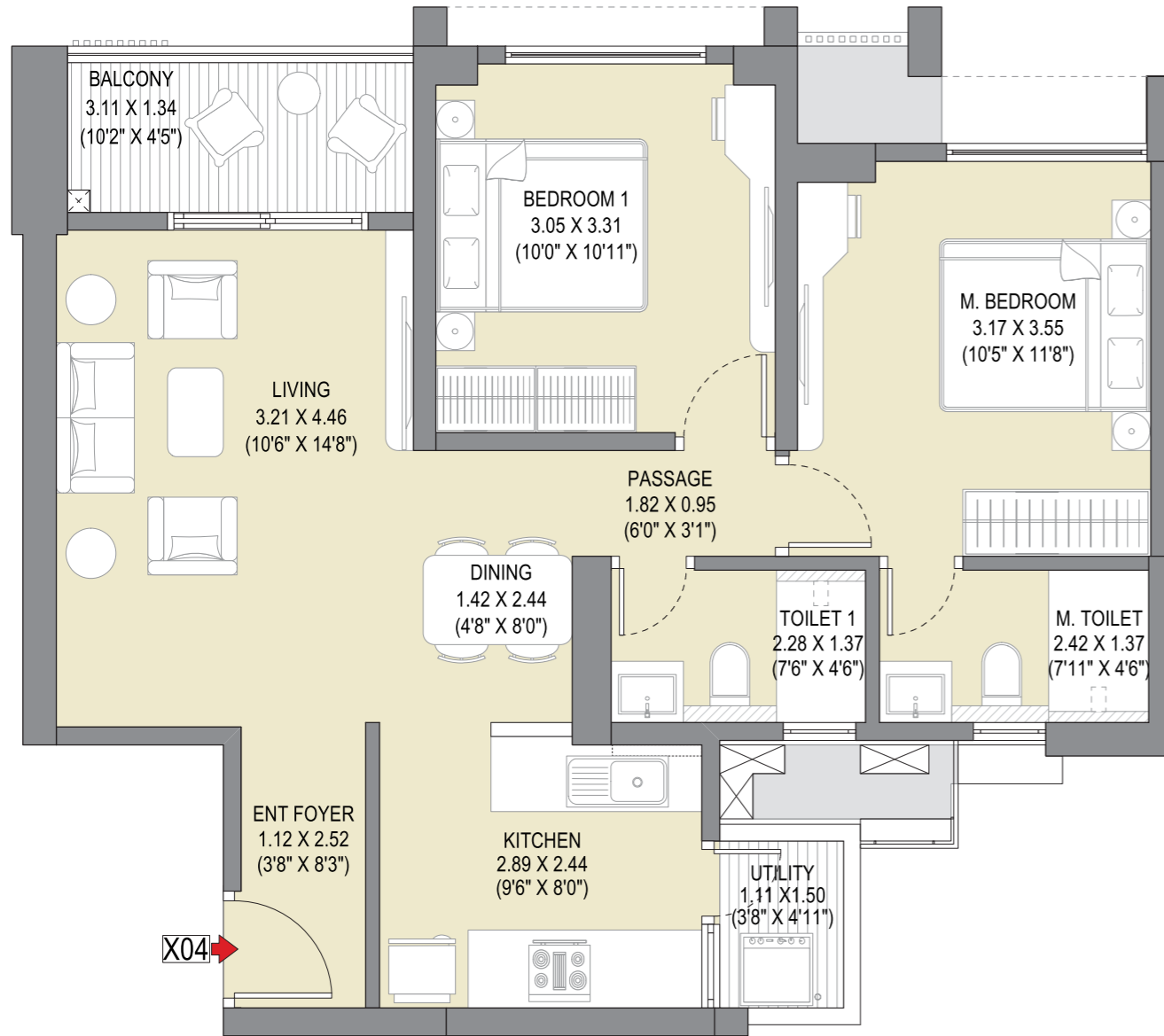
Wellness/Spa Area

**DISCOVER A HOME
PLANNED WITH PURPOSE,
DESIGNED WITH PERSPECTIVE.**

2, 3 & 4 BHK Premium Homes

2 BHK PREMIUM

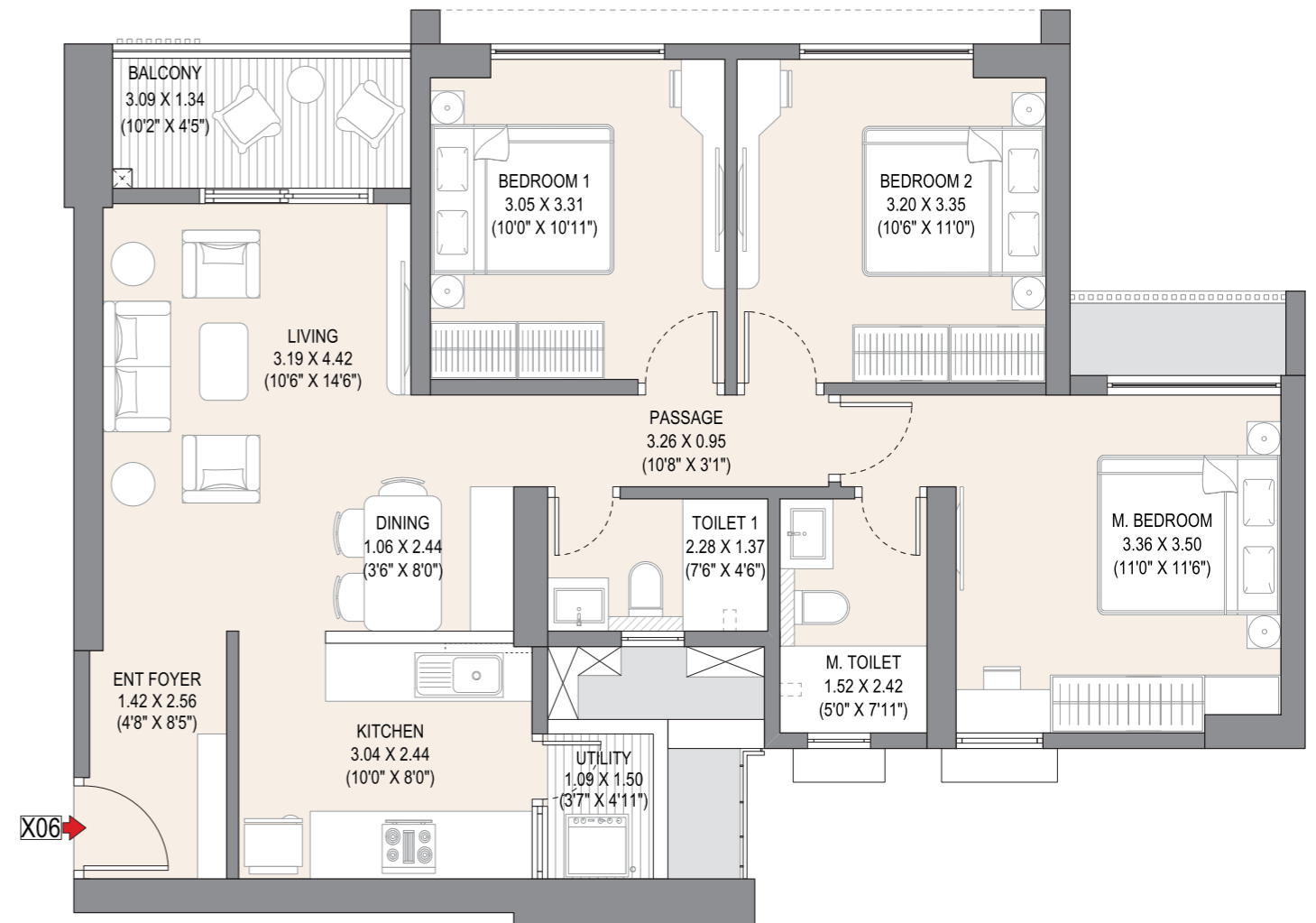
67.81 SQ.MT. (729.91 SQ.FT.)



AREA AS PER RERA				
TYPE	Carpet Area [SQ.MT.]	Total Area [SQ.MT.]	Total Area [SQ.MT.]	Total Area [SQ.FT.]
2 BHK	61.96	5.85	67.81	729.91

3 BHK ELITE

82.61 SQ.MT. (889.21 SQ.FT.)

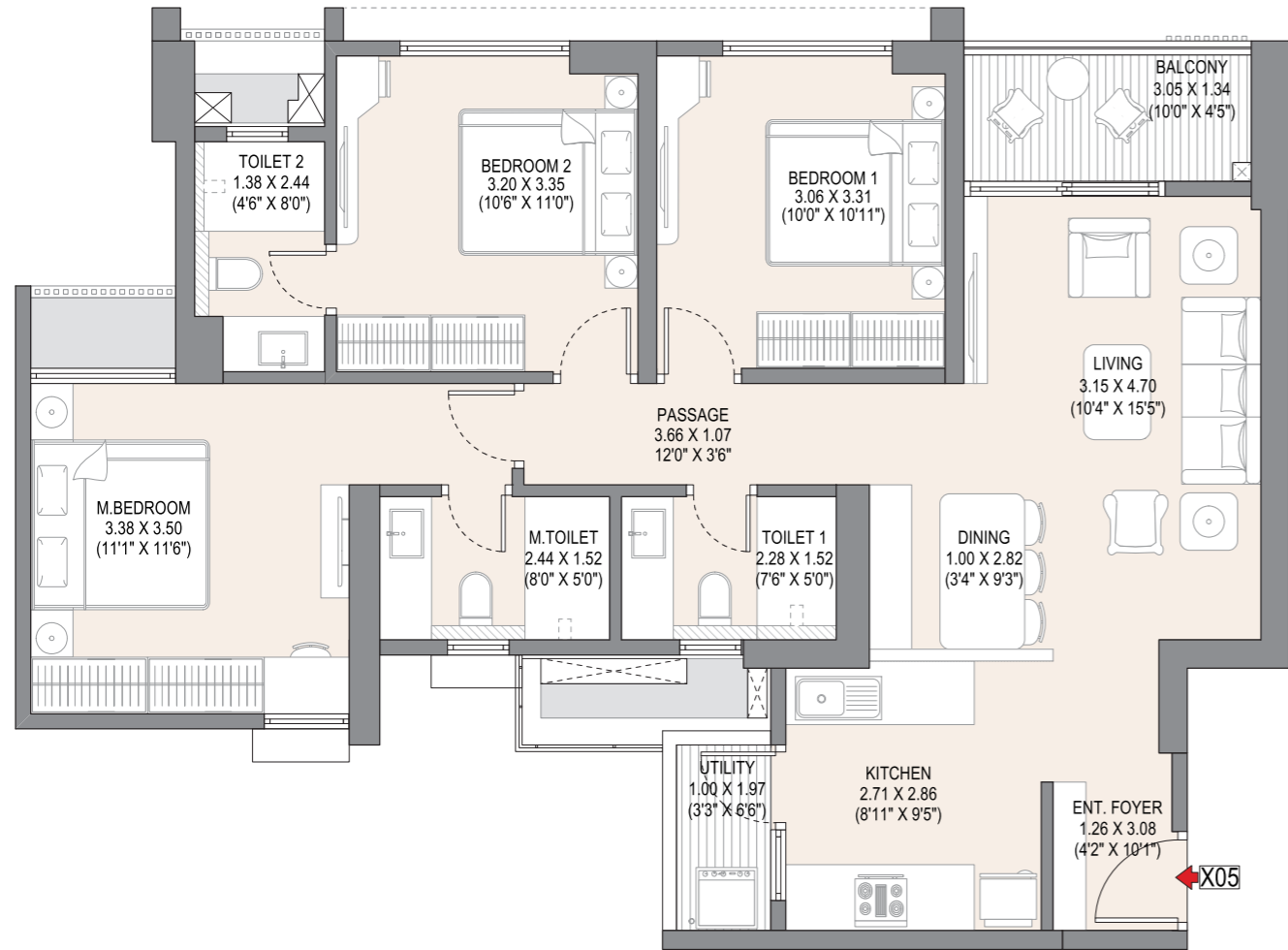


AREA AS PER RERA				
TYPE	Carpet Area [SQ.MT.]	Total Area [SQ.MT.]	Total Area [SQ.MT.]	Total Area [SQ.FT.]
3 BHK	76.81	5.80	82.61	889.21

NOTE: ALL DIMENSIONS ARE IN METERS AND FEET. 1 SQ.MT. = 10,764 SQ.FT., 1 MT. = 3.28 FT. 1. Depth of balcony and utility is measured from inner edge. 2. All dimensions are measured from unfinished surface. 3. The furniture accessories, paintings, items, electronics good additional fittings/ fixtures, decorative items, false ceiling including finishing materials, specifications, shades, sizes and colour of tiles etc. shown in the image are only indicative in nature and are only for the purpose of illustration, indicating a possible layout and do not form part of the standard specifications.

3 BHK REGAL

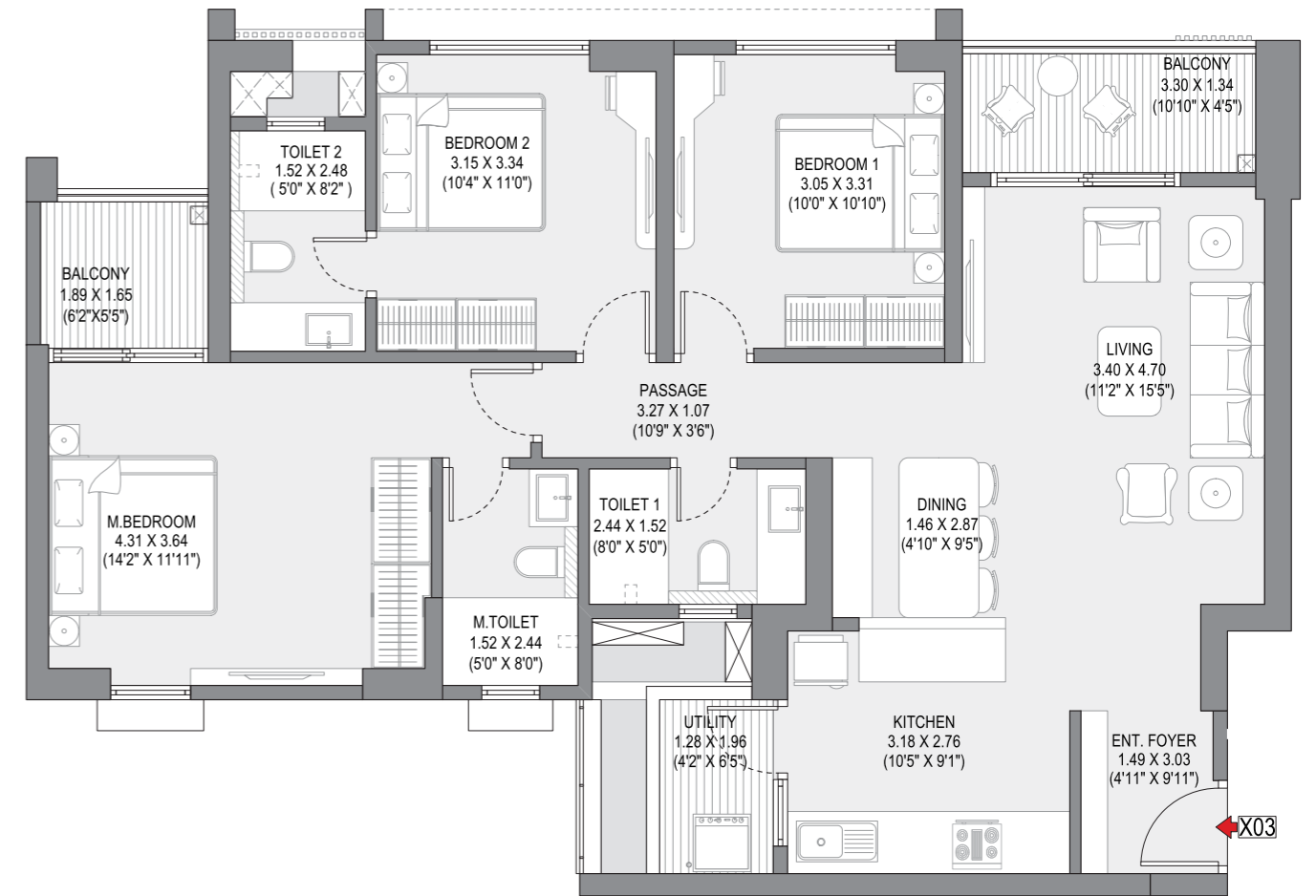
90.70 SQ.MT. (976.29 SQ.FT.)



AREA AS PER RERA				
TYPE	Carpet Area [SQ.MT.]	Total Area [SQ.MT.]	Total Area [SQ.MT.]	Total Area [SQ.FT.]
3 BHK	84.64	6.06	90.70	976.29

3 BHK ULTRA

102.77 SQ.MT. (1106.22 SQ.FT.)

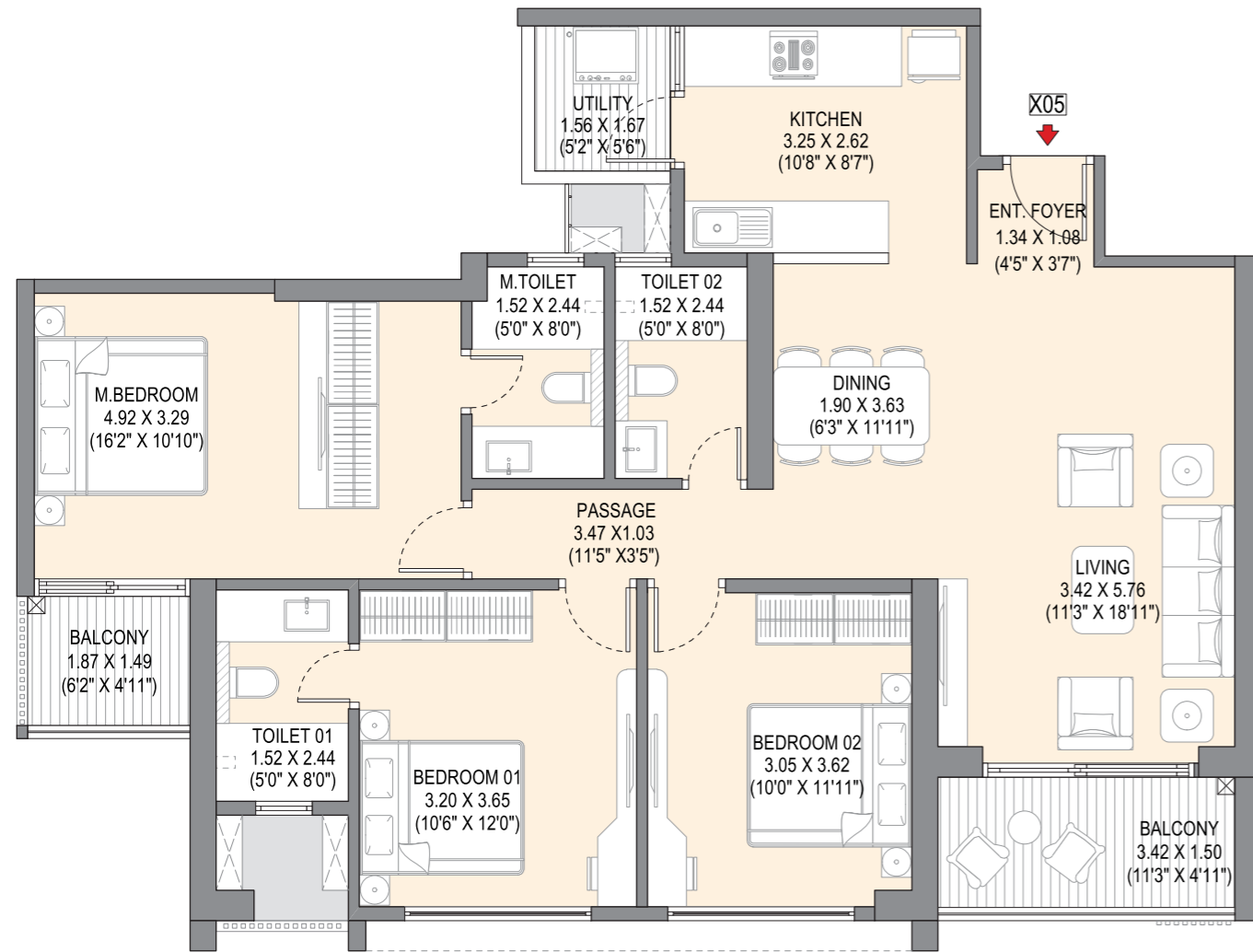


AREA AS PER RERA				
TYPE	Carpet Area [SQ.MT.]	Total Area [SQ.MT.]	Total Area [SQ.MT.]	Total Area [SQ.FT.]
3 BHK	92.72	10.05	102.77	1106.22

NOTE: ALL DIMENSIONS ARE IN METERS AND FEET, 1 SQ.MT. = 10,764 SQ.FT., 1 MT. = 3.28 FT., 1. Depth of balcony and utility is measured from inner edge, 2. All dimensions are measured from unfinished surface, 3. The furniture accessories, paintings, items, electronics good additional fittings/ fixtures, decorative items, false ceiling including finishing materials, specifications, shades, sizes and colour of tiles etc. shown in the image are only indicative in nature and are only for the purpose of illustration, indicating a possible layout and do not form part of the standard specifications.

3 BHK OPULENT A +

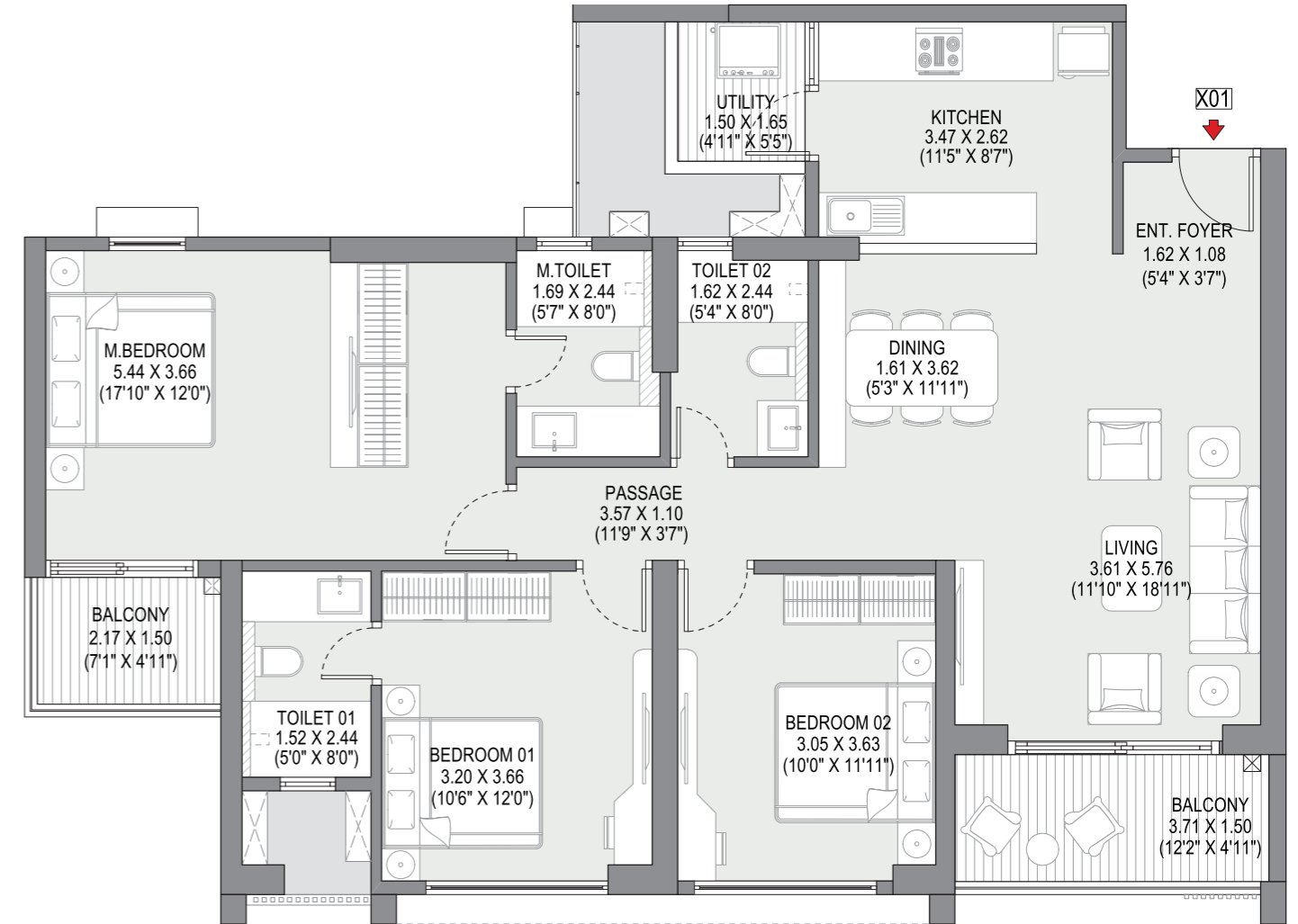
108.11 SQ.MT. (1163.70 SQ.FT.)



AREA AS PER RERA				
TYPE	Carpet Area [SQ.MT.]	Total Area [SQ.MT.]	Total Area [SQ.MT.]	Total Area [SQ.FT.]
3 BHK	97.55	10.56	108.11	1163.70

3 BHK OPULENT B +

114.67 SQ.MT. (1234.31 SQ.FT.)

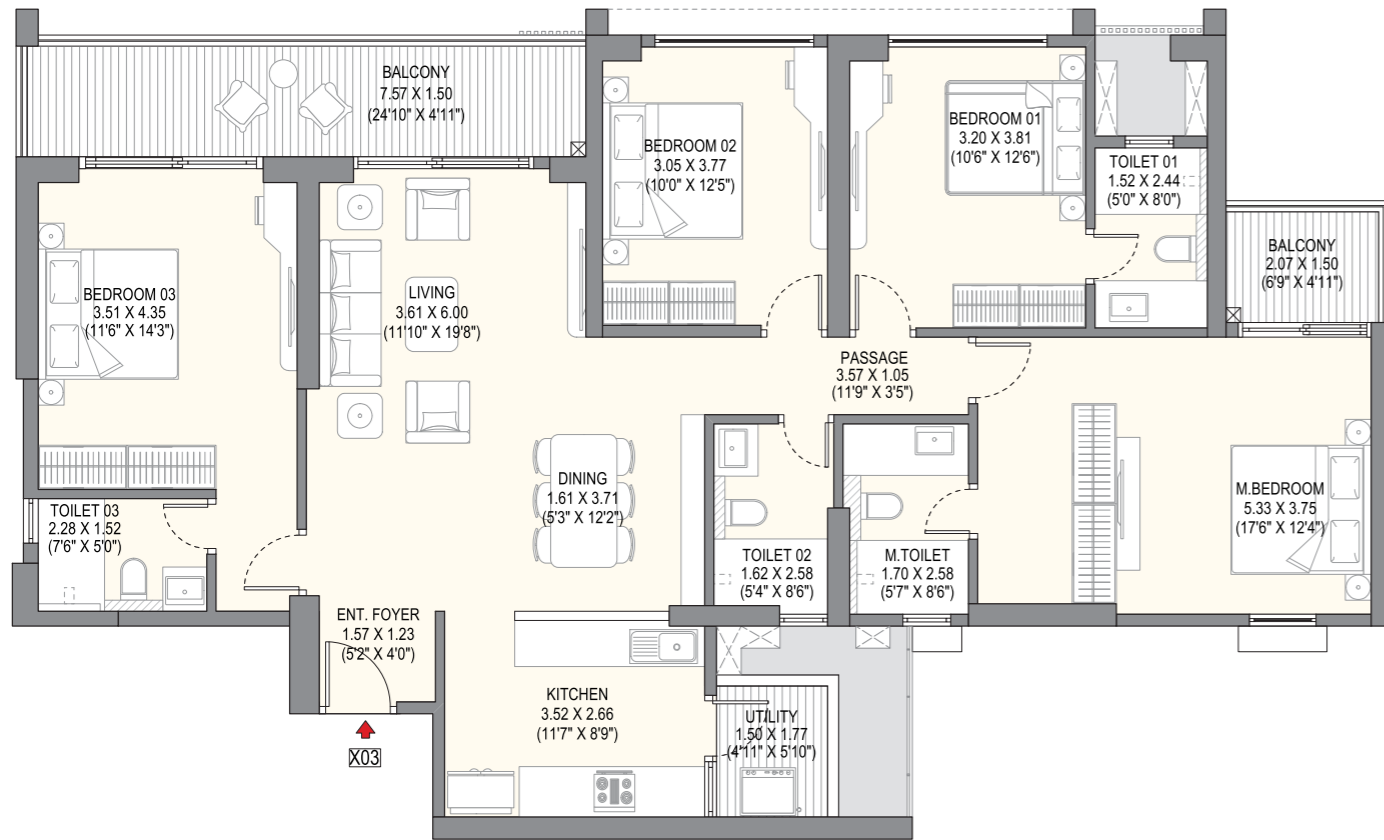


AREA AS PER RERA				
TYPE	Carpet Area [SQ.MT.]	Total Area [SQ.MT.]	Total Area [SQ.MT.]	Total Area [SQ.FT.]
3 BHK	103.34	11.33	114.67	1234.31

NOTE: ALL DIMENSIONS ARE IN METERS AND FEET, 1 SQ.MT. = 10,764 SQ.FT., 1 MT. = 3.28 FT., 1. Depth of balcony and utility is measured from inner edge, 2. All dimensions are measured from unfinished surface, 3. The furniture accessories, paintings, items, electronics good additional fittings/ fixtures, decorative items, false ceiling including finishing materials, specifications, shades, sizes and colour of tiles etc. shown in the image are only indicative in nature and are only for the purpose of illustration, indicating a possible layout and do not form part of the standard specifications.

4 BHK ICONIC

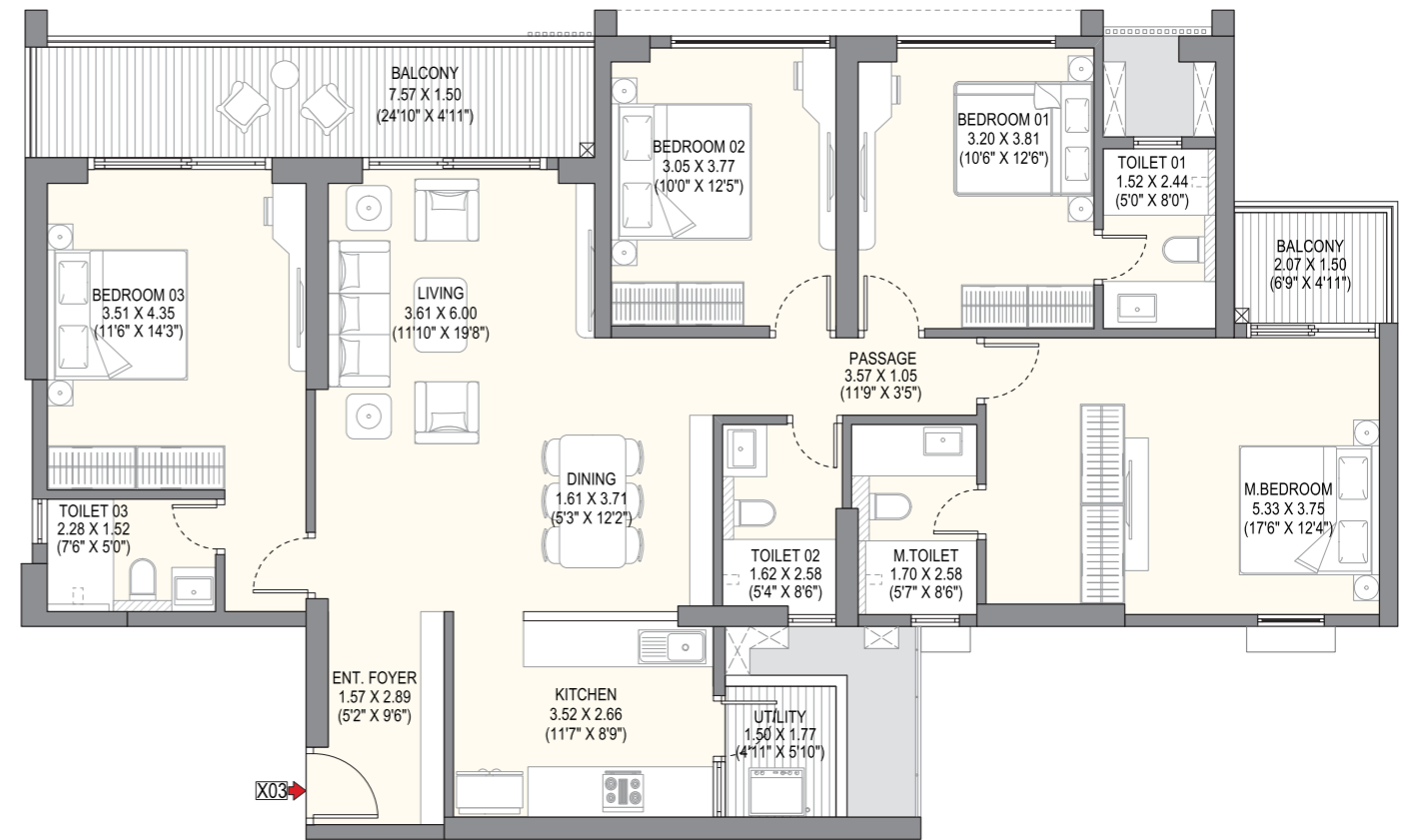
146.87 SQ.MT. (1580.91 SQ.FT.)



AREA AS PER RERA				
TYPE	Carpet Area [SQ.MT.]	Total Area [SQ.MT.]	Total Area [SQ.MT.]	Total Area [SQ.FT.]
4 BHK	129.73	17.14	146.87	1580.91

4 BHK ICONIC

149.83 SQ.MT. (1612.77 SQ.FT.)



AREA AS PER RERA				
TYPE	Carpet Area [SQ.MT.]	Total Area [SQ.MT.]	Total Area [SQ.MT.]	Total Area [SQ.FT.]
4 BHK	132.69	17.14	149.83	1612.77

NOTE: ALL DIMENSIONS ARE IN METERS AND FEET. 1 SQ.MT. = 10,764 SQ.FT., 1 MT. = 3.28 FT., 1. Depth of balcony and utility is measured from inner edge, 2. All dimensions are measured from unfinished surface, 3. The furniture accessories, paintings, items, electronics good additional fittings/ fixtures, decorative items, false ceiling including finishing materials, specifications, shades, sizes and colour of tiles etc. shown in the image are only indicative in nature and are only for the purpose of illustration, indicating a possible layout and do not form part of the standard specifications.

EXPANSIVE BY SPACE.
EXCEPTIONAL BY DESIGN.



4 BHK Foyer

Artist impression for representation purposes only.

*The furniture accessories, paintings, items, electronics good additional fittings /fixtures, decorative items, false ceiling including furnishing materials, specifications, shades, sizes and colour of tiles etc. shown in the images are only indicative in nature and are for representation purpose only.



4 BHK Living Room

Artist impression for representation purposes only.

*The furniture accessories, paintings, items, electronics good additional fittings /fixtures, decorative items, false ceiling including furnishing materials, specifications, shades, sizes and colour of tiles etc. shown in the images are only indicative in nature and are for representation purpose only.



4 BHK Kitchen

Artist impression for representation purposes only.

*The furniture accessories, paintings, items, electronics good additional fittings /fixtures, decorative items, false ceiling including furnishing materials, specifications, shades, sizes and colour of tiles etc. shown in the images are only indicative in nature and are for representation purpose only.



4 BHK Master Bedroom

Artist impression for representation purposes only.

*The furniture accessories, paintings, items, electronics, good additional fittings / fixtures, decorative items, false ceiling including furnishing materials, specifications, shades, sizes and colour of tiles etc. shown in the images are only indicative in nature and are for representation purpose only.



4 BHK Bedroom - 1

Artist impression for representation purposes only.
*The furniture accessories, paintings, items, electronics, good additional fittings, fixtures, decorative items, false ceiling including furnishing materials, specifications, shades, sizes and colour of tiles etc. shown in the images are only indicative in nature and are for representation purpose only.



4 BHK Bedroom - 2

Artist impression for representation purposes only.

*The furniture accessories, paintings, items, electronics good additional fittings / fixtures, decorative items, false ceiling including furnishing materials, specifications, shades, sizes and colour of tiles etc. shown in the images are only indicative in nature and are for representation purpose only.

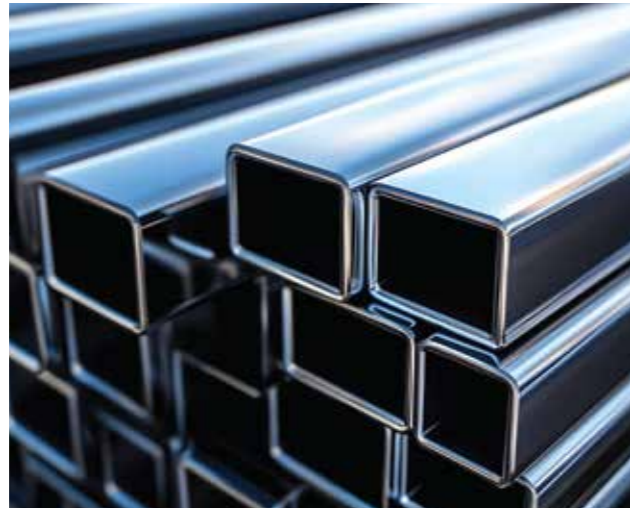


4 BHK Bedroom - 3

Artist impression for representation purposes only.

*The furniture accessories, paintings, items, electronics good additional fittings /fixtures, decorative items, false ceiling including furnishing materials, specifications, shades, sizes and colour of tiles etc shown in the images are only indicative in nature and are for representation purpose only.

CRAFTED WITH
PREMIUM FINISHES,
BRINGING TO LIFE
A HUNDRED THOUSAND
REASONS TO UPGRADE.



High-quality, certified steel helps build strong and earthquake-resistant structures.

- Opting for steel of IS 1786.
- Godrej Properties also uses steel of IS 13920 for earthquake shock resistance.



Using a higher grade concrete to ensure maximum core strength.

- For illustration: if the design grade concrete for structure M30 as a recommendation.
- Godrej Properties procures grade M35 for more strength.



Waterproof coating up to 1.5m in wet areas, more than 5 times of industry standard.

- Industry standard is only of up 0.3m.
- Godrej Properties waterproof up to 1.5m.



Application of anti-capillary coat on floor-brick/block wall junction to prevent dampness

- Anti-capillary coat acts as a waterproof layer between wall and floor.
- Prevents rising dampness from the water on the floor.



Using heat strengthened tempered glass which is stronger and keeps interiors cooler.

- Heat strengthened glass is upto 4 times stronger.
- Reduces temperature by 4 – 5 degree celsius.



Provision of concealed secondary drain spout to drain accidentally seeped water.

- Prevents water leakage in wet areas like washrooms.
- Water can travel through mortar bed to the concealed drain.



In an industry-first practice, damp proofing done to ensure no seepage or dampness.

- Damp proof course applied on external dead walls.
- Shower test on the wall to observe any seepage.

SPECIFICATIONS

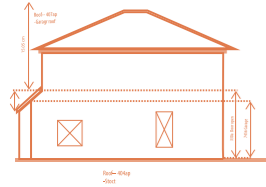
crafted into

A Hundred Thousand Reasons to trust the details.

SPECIFICATIONS

Structure

- Earthquake resistant framed RCC structure - Aluform
- Internal - semi acrylic with gypsum plaster
- External Walls - textured paint



Kitchen

- Granite counter top + SS sink*
- Wall cladding with tiles above counter up to 2 ft.*



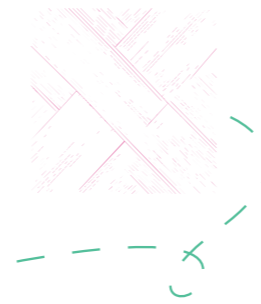
Other Specifications

- Glass railing (except utility)
- Solar water (in master bedroom's toilet)



Flooring*

- Living / Dining - vitrified tiles
- Master Bedroom - vitrified tiles
- Other Bedrooms - vitrified tiles
- Balconies - anti-skid tiles
- Utility Area - vitrified / or anti-skid tiles
- Master Toilet - anti-skid tiles
- Other Toilets - anti-skid tiles
- Kitchen - vitrified tiles



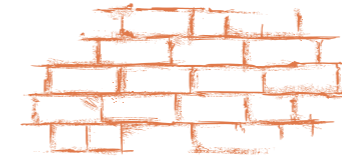
Toilets

- Sanitaryware - Kohler / or equivalent
 - CP Fittings - Kohler / or equivalent
 - Counter Top - granite counter top*
 - Wall Cladding (all toilets) - glazed tiles upto lintel level
- Grid false ceiling in toilets



Safety features**

- Parapet wall for utility, glass railing for flat/unit balcony



Doors & Windows

- Main Entrance - prehung doors
- Other Doors - prehung doors
- Windows / Glazing - sliding windows with mosquito mesh
- Video door phone



Electrical

- Modular Switches - Anchor, Roma or equivalent
- Provision for Cable TV, AC, WIFI points



* The following are the tolerable limits for i. Tiles: +/- 3mm in warpage & bent. ii. Natural stones may have variations in colours/shades and/ or grains.

** As per prevailing NBC regulations.



Site address: Godrej Ivara Plot Bearing / CTS / Survey / Final Plot No.; Gat no. 1276/39, 1276/40, 1276/2, 1276/3, 1276/5 at WAGHOLI, Haveli, Pune, Godrej Ivara is part of a sanctioned Township which is spread across 79.11 Hectares (approx. 195.5 Acres) at Wagholi, Manjari Khurd, Pune. The Developer, viz, Manjari Housing Projects LLP (wherein Godrej Properties Limited is a partner) as owners and being part of said Township, is developing 28.21 Hectares (approx. 2.82 lakhs sq. mts.) of the land in the said Township ("said Land"). The development by Manjari Housing Projects LLP shall have an access to 10.71 Hectares (approx. 107198. sq. mts.) of public greens (including playground) , Clubhouse (membership based, approx. 6500 sq. mts.), Health center (approx. 2316 sq. mts.) and Community market (approx. 2000 sq. mts.) forming part of the common amenities in the Township along with other developers. The sale is subject to terms of application form and agreement for sale. Recipients are advised to apprise themselves of the necessary and relevant information of the project prior to making any purchase decisions. *T&C Apply. The official website of the company is www.godrejproperties.com. Please do not rely on the information provided on any other website.